



OUTSULATION® SYSTEMS

The High Value, Green Building Solution for Design-Build Firms

Looking for high value, durable and environmentally responsible cladding options for your next project? Look no farther than the Dryvit Outsulation® family of systems, which have, for 40 years, provided quality solutions to architects and contractors worldwide. Demonstrably green and extraordinarily design flexible, the Outsulation family of insulated cladding systems provide the following benefits:

Save 10% or more on shell construction cost

The lightweight Outsulation system enables you to reduce the cost of structural concrete, steel and labor.

Save 20–30% on building operation cost

Because Outsulation systems are so energy efficient you can save up to 30% annually on the heating and cooling costs for your building.

Superior energy efficiency

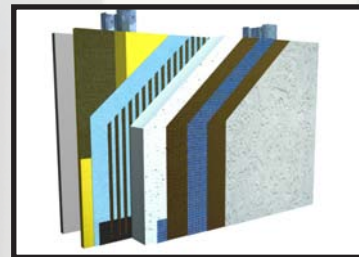
The Oak Ridge National Laboratory found that Dryvit Outsulation systems are 84% more energy efficient than the next-best cladding. A 4-inch Outsulation system over metal framing exceeds both the 2006 International Energy Code and the requirements of ASHRAE 90.1-2007.

Smaller Carbon Footprint than brick and stucco

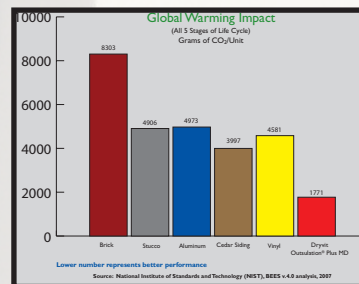
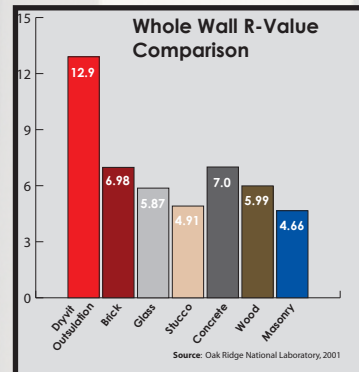
The National Institute of Standards and Technology found that Dryvit Outsulation systems produce a smaller carbon footprint than other tested claddings.

Extraordinary design flexibility

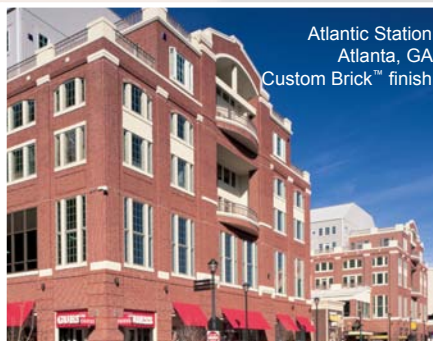
Architectural finishes replicate brick, limestone, granite, metal panels - among many others - and can meet any design challenge. Architectural shapes can easily be added for even greater results.



Outsulation® Plus MD System



University of New Mexico Children's Hospital
Albuquerque, NM
Reflectit™ finish



Atlantic Station
Atlanta, GA
Custom Brick™ finish



Belmont University
Nashville, TN
Sandpebble® finish

www.dryvit.com
www.dryvitisgreen.com
www.dryvitcare.com



An RPM Company